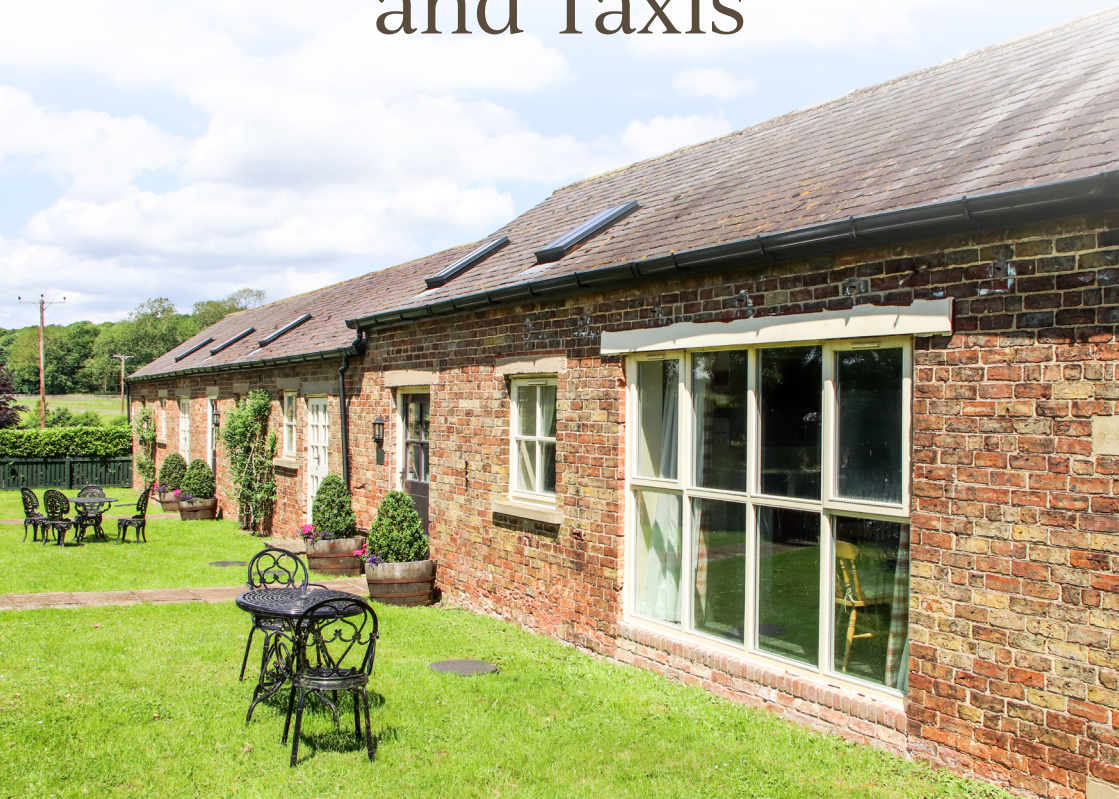




— The —  
Manor Rooms

On The Drewton Estate

# Accommodation and Taxis





## The Dairy and The Old Cowshed

[www.drewtons.co.uk](http://www.drewtons.co.uk)

Located on the edge of the Yorkshire Wolds in the stunning surroundings of The Drewton Estate, The Dairy and The Old Cowshed have been sympathetically restored and transformed into five-star rated self-catering accommodation.

Both cottages have recently been redecorated and feature a new range of cosy yet stylish furnishings. They sleep up to four people and have free, wireless internet access.

Guests are welcome to explore footpaths on the 1,200-acre Drewton Estate, which is home to rare Red Kites and other wildlife.

Ideal for short breaks, the cottages make a great base from which to explore the wider area, including the rolling hills of the Yorkshire Wolds, the rugged North York Moors and the delights of the East Coast.

There's a minimum stay of two nights and a welcome pack is included, with a complimentary breakfast voucher for the happy couple.





**Nordham Cottages** - 9 & 11 Nordham, North Cave.  
[www.nordhamcottages.co.uk](http://www.nordhamcottages.co.uk)  
Louise Martin: 07951 745033 or 01430 422266  
[louisem200@hotmail.co.uk](mailto:louisem200@hotmail.co.uk)

Nordham Cottages are situated on the quiet street in Nordham, North Cave, perfectly located for Beverley/Hull/York/ Yorkshire Wolds/Coast. 4 star Gold Horseshoe sleeps 5, 4 star Bay Tree Cottage sleeps 2. Extra beds accommodated. On edge of village, with streamside walks from door and also the North Cave Wetlands. Idyllic parkland walks to 'gastro' Hotham Arms. Two minutes from the M62, and same to The Manor Rooms/Drewtons Farm Shop.



**Newbald B&B** - North Newbald  
[www.newbaldbandb.co.uk](http://www.newbaldbandb.co.uk)  
Tel: 01430 827613  
[pjcheeseman@sky.com](mailto:pjcheeseman@sky.com)

Delightfully cosy accommodation in this lovely village. Ideal for those attending events, family gatherings, walking and cycling holidays. We are situated about two miles from The Manor Rooms and Drewton's Farm Shop and Restaurant, in the heart of the lovely village of Newbald. We offer luxury ensuite accommodation with a private lounge, kitchenette and off street parking. Breakfast is continental self-service style.



**Woodland Lodge Retreat**  
Barmby Lane, Eastrington, DN14 7QW  
[www.woodlandlodgeretreat.co.uk](http://www.woodlandlodgeretreat.co.uk)  
Screetons: 01430 431201  
[info@woodlandlodgeretreat.co.uk](mailto:info@woodlandlodgeretreat.co.uk)

Woodland Lodge is an idyllic country retreat providing holiday accommodation for up to 14 guests and can also be used as a venue for events and retreats. Set in 1.3 acres of landscaped grounds and situated in a very secluded rural setting in the East Yorkshire countryside with plenty to see and do. We have two beautifully designed luxury pods suitable for either couples or families to enjoy.



**Broadgate Farm Cottages** - Walkington, HU17 8RP  
[www.broadgatefarmcottages.co.uk](http://www.broadgatefarmcottages.co.uk)  
Tel: 01482 888111  
[elaine@broadgatefarmcottages.co.uk](mailto:elaine@broadgatefarmcottages.co.uk)

Award winning luxury 5 star gold holiday cottages just 2 miles from Beverley and 6 miles from The Manor Rooms. Cottages from 2 to 6 bedrooms and ideal for groups up to 24. Weekend breaks (2 or 3 nights) available all year round. Accessible cottages available.



**Red House Farm Cottages**  
North Newbald, YO43 4TJ  
[www.airbnb.co.uk/rooms/16061013](http://www.airbnb.co.uk/rooms/16061013)

Six beautifully furnished two-bedroom brick cottages, set within approximately fourteen acres of countryside. Ideally situated for those who enjoy the tranquility of the countryside and, for the more energetic, there are great cycling or walking routes along the "Wolds Way."



**Cave Castle Hotel** - South Cave, HU15 2EU  
[www.cavecastlehotel.com](http://www.cavecastlehotel.com) Tel: 01430 422245

Are you looking for a place to stay in the East Riding of Yorkshire? Book your accommodation at the Cave Castle Hotel, one of the best hotels in the region. The Cave Castle Hotel in Hull & the East Riding of Yorkshire is a beautiful Victorian manor house which has been sympathetically refurbished and extended to offer 71 bedrooms with a mix of traditional (some having four-poster beds) and contemporary designs.



**Little Wold Away Glamping** - Everthorpe, HU15 2AD  
[www.littlewoldaway.co.uk](http://www.littlewoldaway.co.uk) Tel: 01430 470805  
[littlewoldawayglamping@gmail.com](mailto:littlewoldawayglamping@gmail.com)

Little Wold Away is a new glamping retreat in East Yorkshire, tucked away in beautiful woodland surroundings. The site is hidden away within the Yorkshire Wold Heritage region with its stunning country walks and plenty to see and do. We have two beautifully designed luxury pods suitable for either couples or families to enjoy.



**The Beveley Arms - Beverley, HU17 8DD**  
[www.beverleyarms.co.uk](http://www.beverleyarms.co.uk) Tel: 01482 296999

The Georgian coaching inn, located in the medieval town of Beverley, first opened its doors in 1794. Serves food and drink and offers 38 beautiful bedrooms for a sleepover. Also free onsite parking just for our guests.



**North Star Glamping - Sancton**  
[www.northstarclub.co.uk](http://www.northstarclub.co.uk) Tel: 01439 748457  
[hello@northstarclub.co.uk](mailto:hello@northstarclub.co.uk)

We have 8 unique woodland suites to choose from, all inspired by the people and places of this fascinating county. The Woodland suites all have a cosy sitting room with a double sofa bed, large bedroom with kingsize bed and a wood burner, second bedroom with bunk beds and of course a spacious bathroom with bath and separate walk-in shower.



**Estate Escapes Holiday Cottages, Hotham.**  
[www.estateescapes.co.uk](http://www.estateescapes.co.uk)  
Tel: 07770 793370 [victoria@estateescapes.co.uk](mailto:victoria@estateescapes.co.uk)

Our trio of award-winning cottages are set on the nearby Hotham Estate, in East Yorkshire. They sleep 4-6 people, each has its own private garden/patio area. Lovingly renovated, they boast their own wood burning stoves, open plan living spaces, cosy sofas and light, airy bedrooms to make your stay comfortable, relaxing and memorable. Hot tub available in Park Cottage. Great pub 5 mins walk.



**The Fox & Coney Inn - South Cave, HU15 2AT**  
[www.thefoxandconeyinn.co.uk](http://www.thefoxandconeyinn.co.uk) Tel: 01430 471050

Surrounded by stunning Yorkshire Wolds countryside and in close proximity to Hull, Beverley and the historic city of York, The Fox and Coney Inn provides an ideal base for exploring East Yorkshire. Set in the market town of South Cave, the 300 year old Grade II listed Fox and Coney, an Inn since 1731, subtly combines authentic period features and contemporary accommodation to help you enjoy your break in comfort.



**Toll Cottage** - Cottingham, HU16 5RL  
[www.thetollcottage.co.uk](http://www.thetollcottage.co.uk)  
Tel: 01482 840263 Mobile: 07834 606509  
[enquiries@thetollcottage.co.uk](mailto:enquiries@thetollcottage.co.uk)

This place is very comfortable and relaxing to stay in with a very well run feel. The location is excellent for nearby towns or day trips to the Yorkshire coast, moors and dales. Excellent breakfast from a lovely host.



**Wolds Way Holiday Cottages**  
Low Hunsley Farm, Cottingham, HU20 3UP  
[www.woldswayholidaycottages.co.uk](http://www.woldswayholidaycottages.co.uk)  
Rachel: 07889 410928  
[rachel@woldswayholidaycottages.co.uk](mailto:rachel@woldswayholidaycottages.co.uk)

At Low Hunsley Farm, we renovated our beautiful range of traditional buildings into 7 superb 1, 2 and 3 bedroom holiday cottages. All of our cottages are finished to a very high standard and offer everything you could need for a stay away from home. All of the properties have enclosed gardens and the two larger ones have hot tubs.



**Hobbit Hole** - Ellerker, HU15 2DU  
[www.lettingzone.biz](http://www.lettingzone.biz),  
[airbnb/holidaylettings.co.uk](http://airbnb/holidaylettings.co.uk) & [ownersdirect](http://ownersdirect)  
Nicola Bean: 07572 462975  
[15nicolabean@gm.com](mailto:15nicolabean@gm.com)

One bed cottage situated in quite village location, clean and tastefully furnished, cottage appeal with modern touches. Wood burning stove in the lounge. Unlimited internet provided, sky TV. Great location for easy access to M62 and surrounding locations.



**Castle Mews** - South Cave  
Nicola Bean - Contact details as Hobbit Hole above.

Three-bed mews house located in South Cave close to Cave Castle. Two spacious double rooms with kingsize beds, both rooms have TVs, small single room suitable for teenager/child. Comfy living room and spacious kitchen. Off road parking to the rear for 2 cars. Wifi/Netflix.



**Pond View Cottage** - Brantingham, HU15 1QJ  
[www.pondviewcottagebrantingham.co.uk](http://www.pondviewcottagebrantingham.co.uk)  
Tel: 01430 424441

Opposite the village green and duck pond, this luxury cottage has a cosy wood-burning stove and lies within easy reach of many Yorkshire and Lincolnshire attractions.



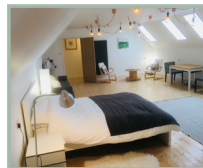
**Danum house**  
Little Weighton, HU20 3XH  
[www.airbnb.co.in/rooms/12025016?](http://www.airbnb.co.in/rooms/12025016?shellybolder@hotmail.co.uk)  
[shellybolder@hotmail.co.uk](mailto:shellybolder@hotmail.co.uk)

Private room in house. Lovely double room, accommodates 2 with king-size bed. Quiet private road. Full bathroom next to bedroom. Help yourself to coffee and tea anytime. Parking in private drive. Wifi. Come and go as you please.



**The Fold** - South Newbald, YO434RX  
[www.airbnb.co.uk](http://www.airbnb.co.uk)  
Paul and Natalie: 07801 926367  
[clucasp@yahoo.co.uk](mailto:clucasp@yahoo.co.uk)

Lovely spacious king-sized room with ensuite facility. The room is located on the second floor of our detached house and you will have sole access to this area. The house is at the bottom end of a quiet cul de sac at the southern end of the village. There are two fantastic pubs within walking distance and there are lots of walks and cycling routes right on the door step.



**Horrey's Cavern** - South Cave, HU15 2HJ  
<https://Airbnb.com/h/horreyscavern-southcave>  
Nick Thompson: 07952 862378  
[bikersandhikers@icloud.com](mailto:bikersandhikers@icloud.com)

Located in small idyllic market town of South Cave on the edge of the Yorkshire Wolds. Accommodation is private and detached from the main residence. Large open plan bedroom and living space situated above a triple garage. 1 king size bed, 1 double sofa bed suitable for 2 children. 5 Star Rating from Guest Reviews.

There are many more accommodation providers and places of interest in our local area. Please visit the following for further detail ...

[www.visithullandeastyorkshire.com](http://www.visithullandeastyorkshire.com)

[www.yorkshire.com](http://www.yorkshire.com)

[www.airbnb.co.uk](http://www.airbnb.co.uk)

## Taxi/Car Hire

### South Cave Taxis

South Cave

07891 194009

[stevenjcutts@yahoo.co](mailto:stevenjcutts@yahoo.co)

### Riverside Travel Ltd

Brough

01482 666525

### B.W.T

Newport

01430 440904

### Willerby Cars

Willerby

01482 659659

### Karens Kabs

Hessle

01482 642222

### Lucky 7

Hessle

01482 627777

### Hessle Cars

Hessle

01482 646460

### Cottingham Cars

Cottingham

01482 847848

Visit our website [www.themanorrooms.co.uk](http://www.themanorrooms.co.uk)

## Follow our social media!



The Manor Rooms  
The Drewton Estate  
South Cave  
East Riding of Yorkshire  
HU15 2AG

01430 425079

[info@themanorrooms.co.uk](mailto:info@themanorrooms.co.uk)

